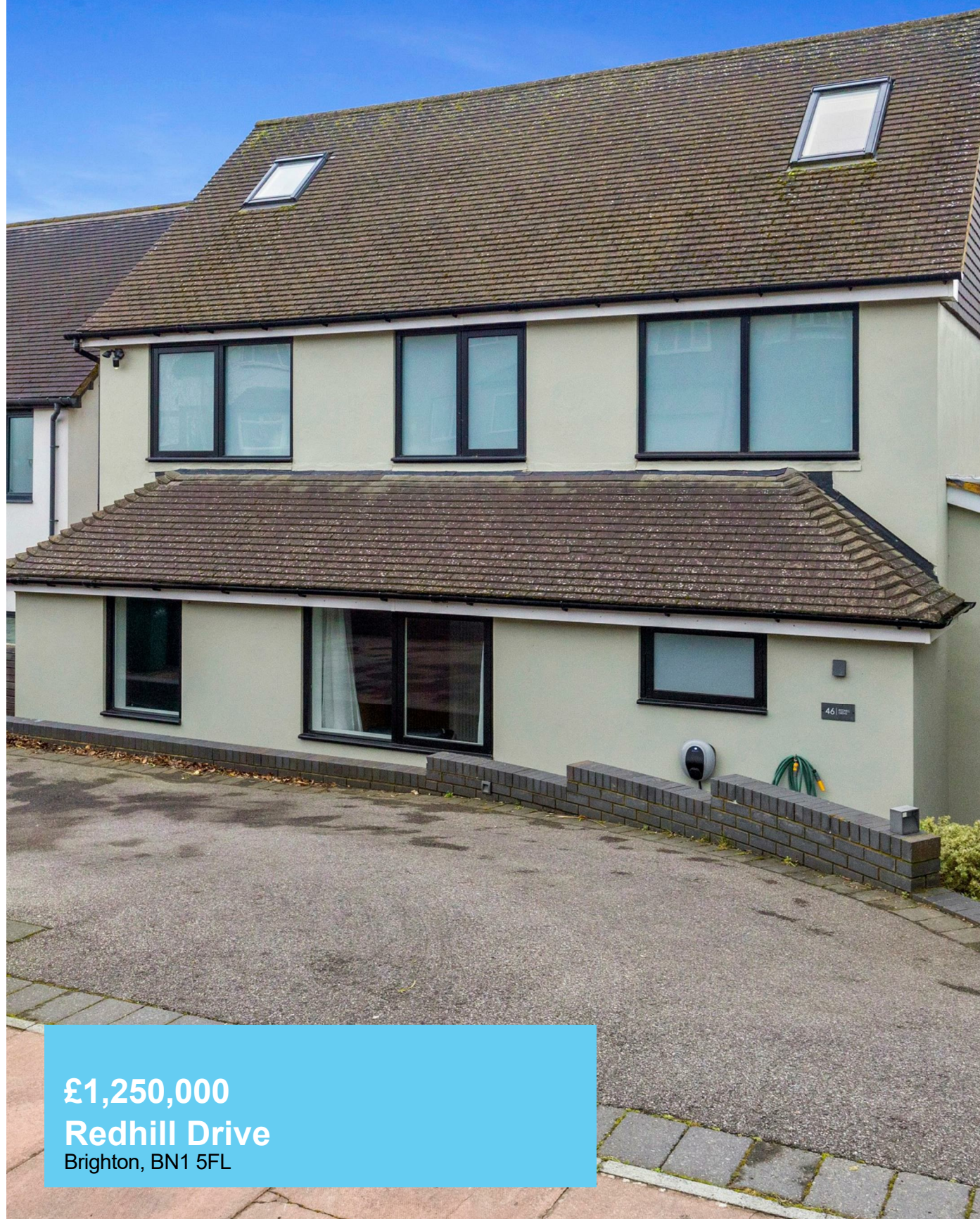




Jack Taggart & Co

RESIDENTIAL SALES AND LETTINGS



£1,250,000

Redhill Drive

Brighton, BN1 5FL

PROPERTY SUMMARY

Nestled on the highly sought-after Redhill Drive in Westdene, this beautifully presented four-bedroom detached family home is a true masterpiece of contemporary design, offering just under 2,200 sq. ft. of exquisite living space. Every detail of this home has been thoughtfully considered to blend modern luxury with practical family living. From the moment you arrive, the home's striking modern architecture and impressive kerb appeal make an immediate impact. The sleek façade, clean lines, and large modern windows exude sophistication, while the spacious driveway provides ample off-road parking for multiple vehicles and EV charge point on the drive.

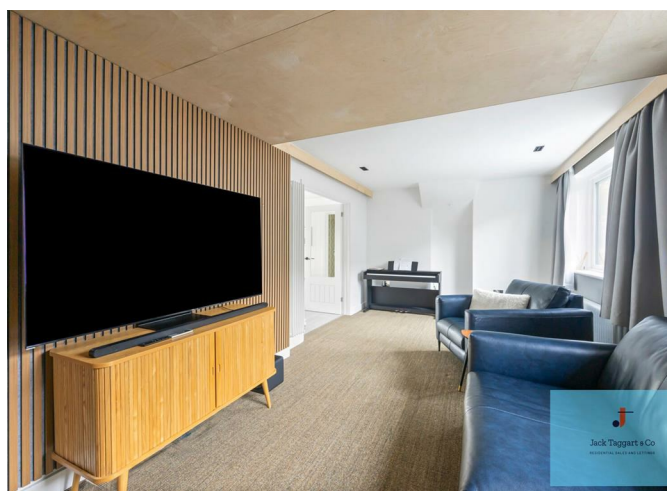
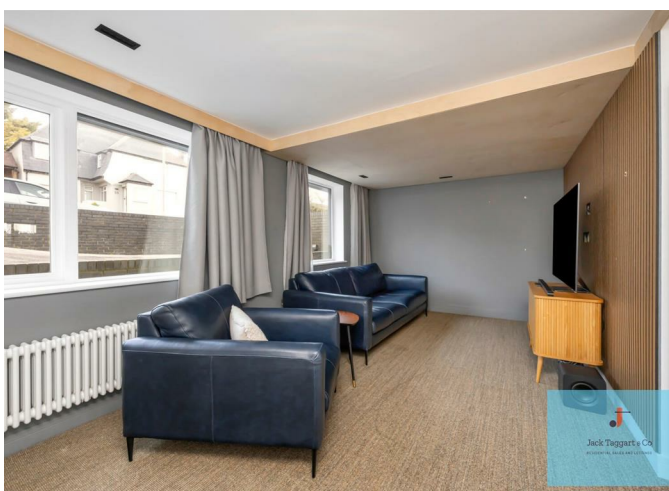
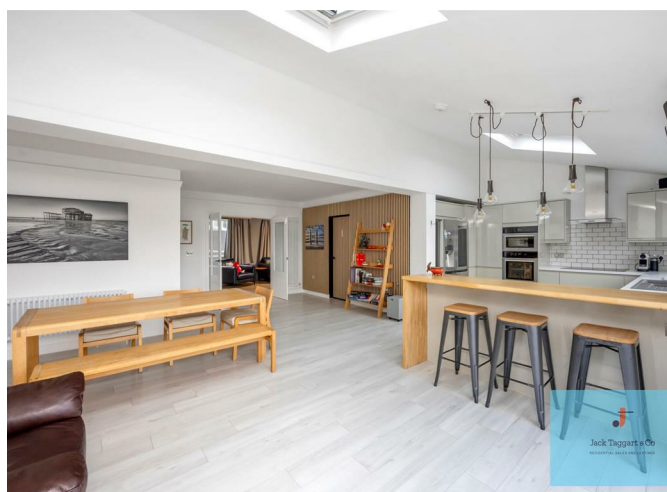
4



2



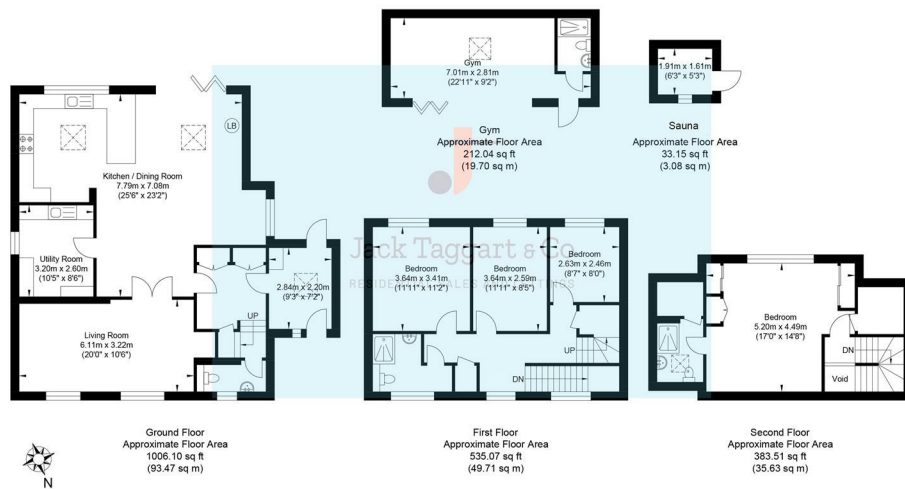
2







Redhill Drive



Approximate Gross Internal Area (Including Gym & Outbuilding) = 201.59 sq m / 2169.88 sq ft
Illustration for identification purposes only, measurements are approximate, not to scale.



Energy Efficiency Rating		
	Current	Potential
Very energy efficient - lower running costs		
(92 plus) A		
(81-91) B		
(69-80) C		
(55-68) D		
(39-54) E		
(21-38) F		
(1-20) G		
Not energy efficient - higher running costs		
England & Wales EU Directive 2002/91/EC		

Agents Note: Whilst every care has been taken to prepare these particulars, they are for guidance purposes only. All measurements are approximate and are for general guidance purposes only and whilst every care has been taken to ensure their accuracy, they should not be relied upon and potential buyers/tenants are advised to recheck the measurements